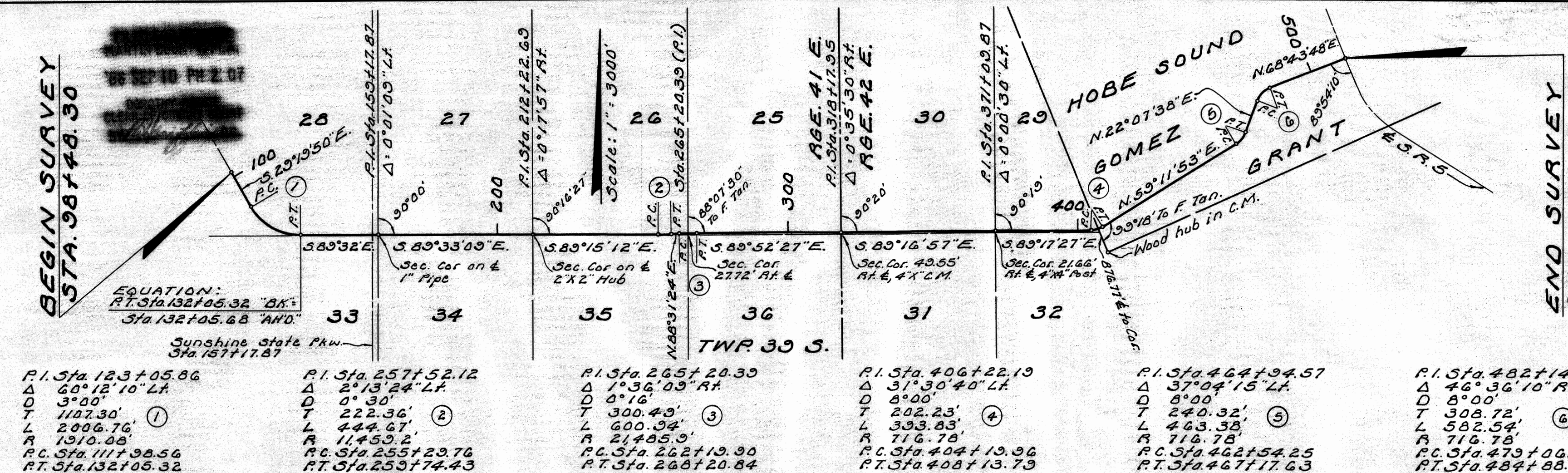


BEGIN SURVEY  
STA. 98+48.30

END SURVEY  
STA. 512+42.95



EQUATION:  
 P.T. Sta. 132+05.32 "BK."  
 Sta. 132+05.68 "AND."  
 Sunshine State Pkw.  
 Sta. 157+17.87

P.I. Sta. 123+05.86  
 $\Delta$  60°12'10" Lt.  
 D 3°00'  
 T 1107.30'  
 L 2006.76'  
 R 1910.08'  
 P.C. Sta. 111+98.56  
 P.T. Sta. 132+05.32

P.I. Sta. 257+52.12  
 $\Delta$  2°13'24" Lt.  
 D 0°30'  
 T 222.36'  
 L 444.67'  
 R 11,459.2'  
 P.C. Sta. 255+29.76  
 P.T. Sta. 259+74.43

P.I. Sta. 265+20.39  
 $\Delta$  1°36'09" Rt.  
 D 0°16'  
 T 300.49'  
 L 600.94'  
 R 21,485.9'  
 P.C. Sta. 262+19.90  
 P.T. Sta. 268+20.84

P.I. Sta. 406+22.19  
 $\Delta$  31°30'40" Lt.  
 D 8°00'  
 T 202.23'  
 L 393.83'  
 R 716.78'  
 P.C. Sta. 404+19.96  
 P.T. Sta. 408+13.79

P.I. Sta. 464+94.57  
 $\Delta$  37°04'15" Lt.  
 D 8°00'  
 T 240.32'  
 L 463.38'  
 R 716.78'  
 P.C. Sta. 462+54.25  
 P.T. Sta. 467+17.63

P.I. Sta. 482+14.86  
 $\Delta$  46°36'10" Rt.  
 D 8°00'  
 T 308.72'  
 L 582.54'  
 R 716.78'  
 P.C. Sta. 479+06.14  
 P.T. Sta. 484+88.68

We, John W. Cashin, as Executive Director of the State Road Department of the State of Florida, and F.K. Strickland, as Secretary of the State Road Department of the State of Florida, do hereby certify that this map is the Official Map of Location and Survey of a portion of Section 89510, designated as a part of State Road 5-708 in Martin County, Florida: Said portion of Section 89510 extending from a point in the Southwest 1/4 of Section 28, Township 39 South, Range 41 East Easterly and Northeasterly to State Road 5.

Filed for record in the Office of the Clerk of the Circuit Court for the County of Martin, State of Florida, in Map Book 4, Page 73, on the 10th day of September, A.D. 1968.

Prepared and adopted by the State Road Department of the State of Florida under provisions of Section 335.02, Florida Statutes of 1955.

John W. Cashin  
 Executive Director, State Road Department

Attest: F.K. Strickland  
 Secretary, State Road Department

Approved: Robert L. O'Connell  
 Engineer of Rights of Way  
 Date: June 19, 1968

Dorothy Pierce  
 Clerk of the Circuit Court  
 Martin County, Florida